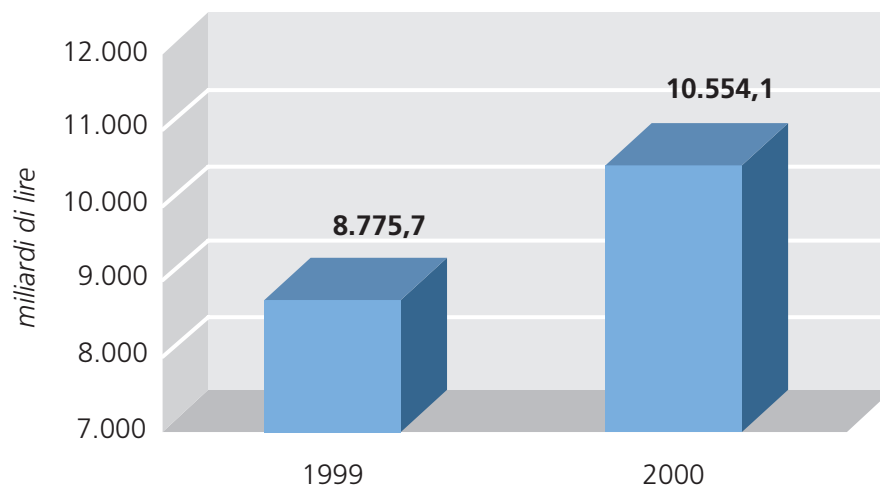




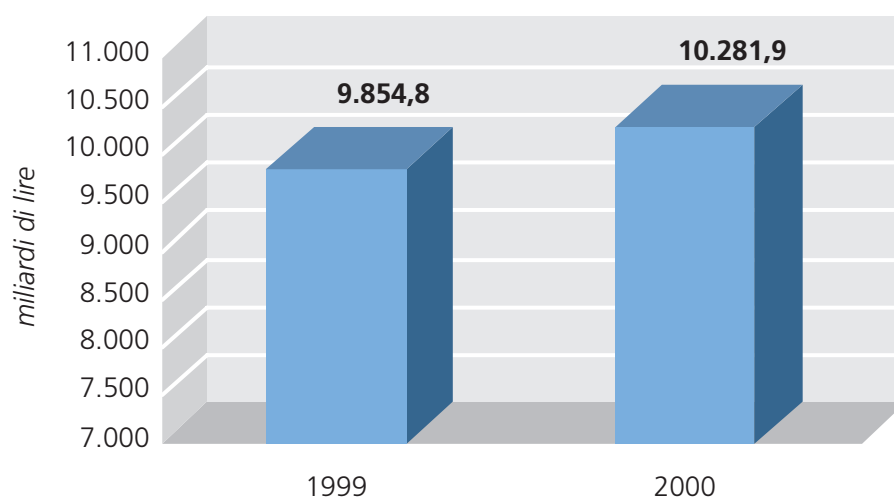
## SINTESI DEI RISULTATI

### Impieghi ordinari netti per cassa clienti



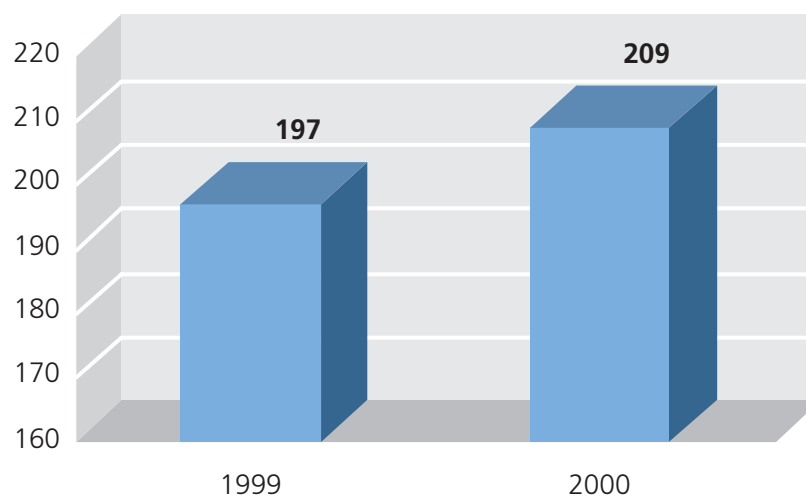
	1999	2000	%2000/1999
Impieghi ordinari netti per cassa clienti	8.775,7	10.554,1	20,3%

### Raccolta diretta clienti



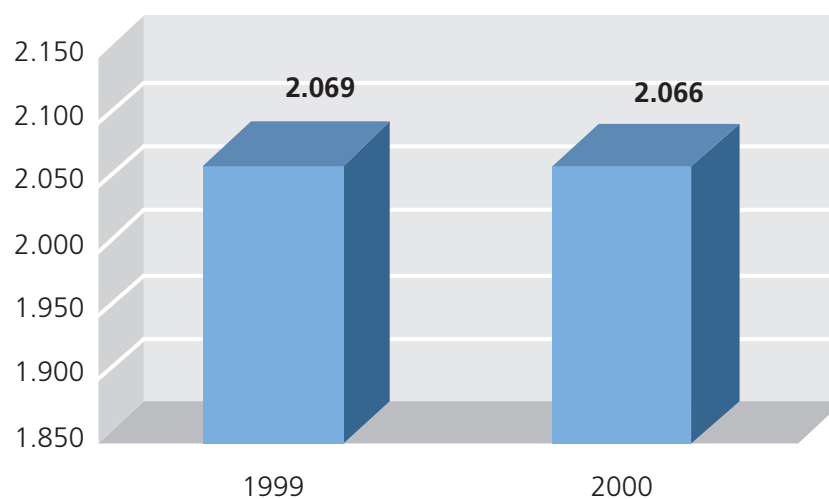
	1999	2000	%2000/1999
Raccolta diretta clienti	9.854,8	10.281,9	4,3%

### Sportelli a piena operatività



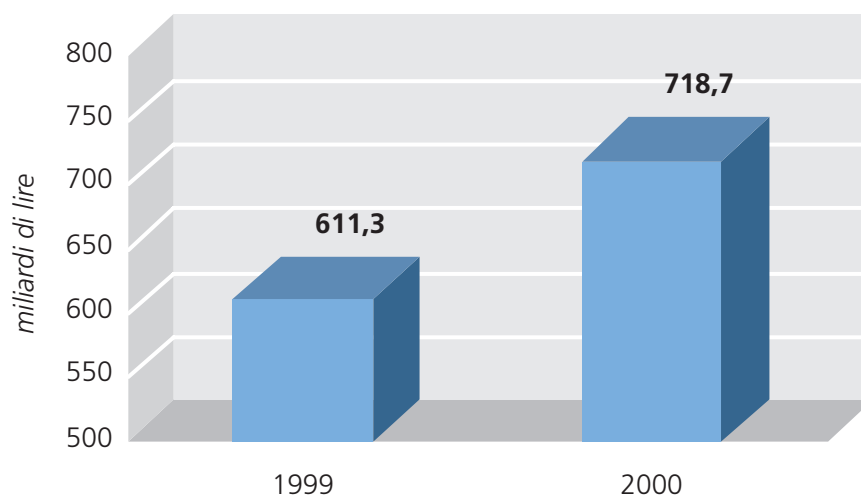
	1999	2000	%2000/1999
Sportelli a piena operatività	197	209	6,1%

### Dipendenti



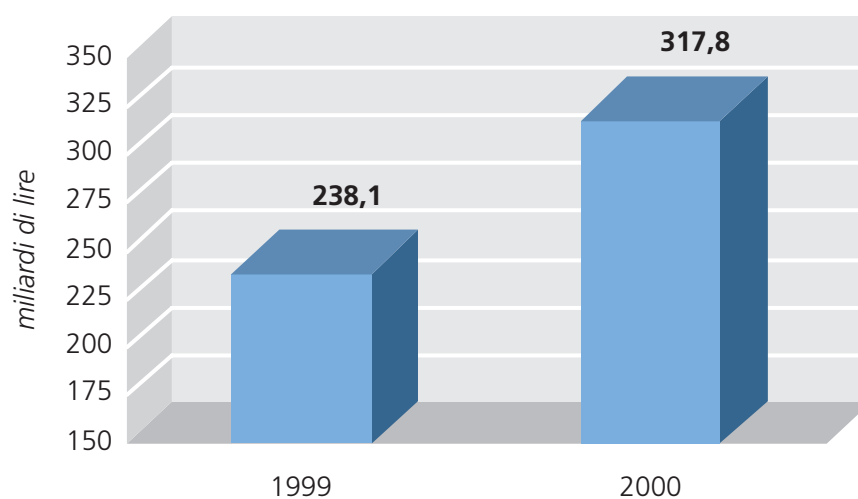
	1999	2000	%2000/1999
Dipendenti	2.069	2.066	-0,1%

### Margine di intermediazione



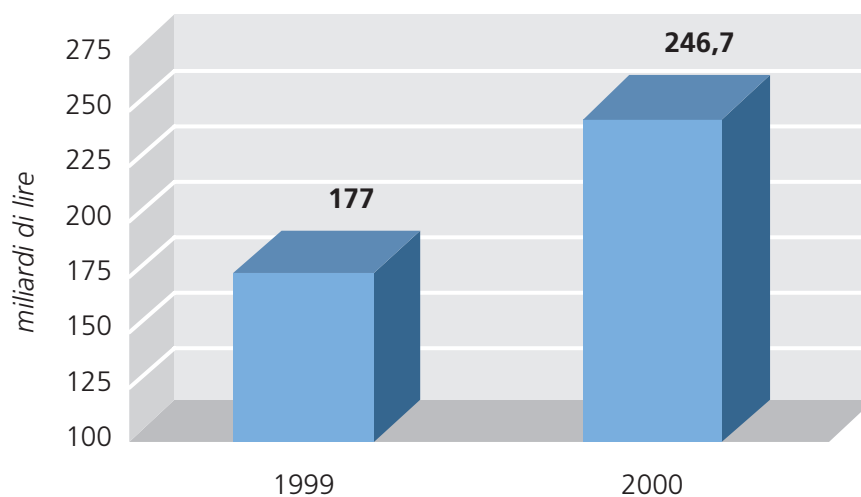
	1999	2000	%2000/1999
Margine di intermediazione	611,3	718,7	17,6%

### Risultato lordo di gestione



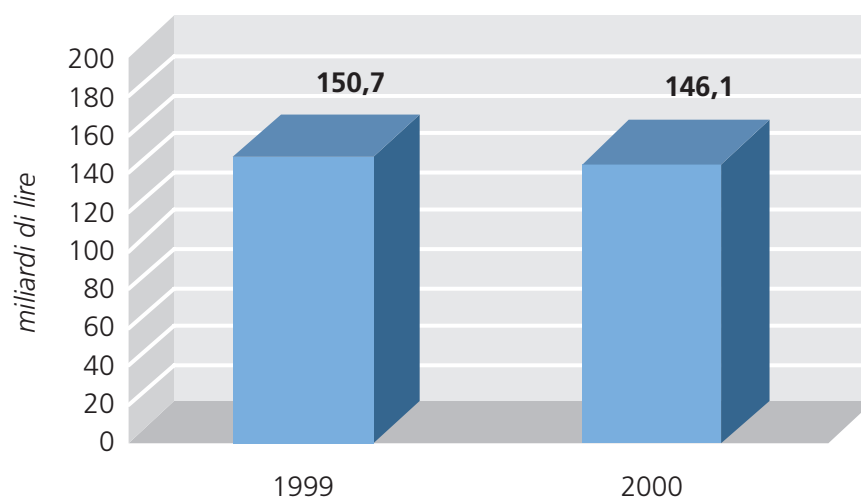
	1999	2000	%2000/1999
Risultato lordo di gestione	238,1	317,8	33,5%

### Utile delle attività ordinarie



	1999	2000	%2000/1999
Utile delle attività ordinarie	177,0	246,7	39,4%

### Utile netto



	1999	2000	%2000/1999
Utile netto	150,7	146,1	-3,1%